

Message from our Campus Principal

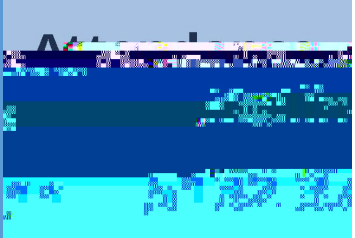
I am so pleased to l ☺


College Principal

Campus Principal

School Hours: 8:25am - 2:50pm
Students are supervised from 8:10am - 3:00pm

PH: (03) 5132 700
PO Box 3411
MORWELL Business Centre, 3841
EMAIL: kurnai.co@educat.on.vic.gov.au





A reminder that visitors to the campus must wear a mask and report to the General Office. We ask that you wait in your car if you are collecting students and to make an appointment if you need to speak with a staff member.

Year 7 News

Facing the classroom, in person

Week 2, Day 1 saw students masks hiding a complete return to face-to-face learning yet the listening, curiosity, chatter and work energy was a pleasure to see. So was the upgrade to the Year 7 building, shown below!

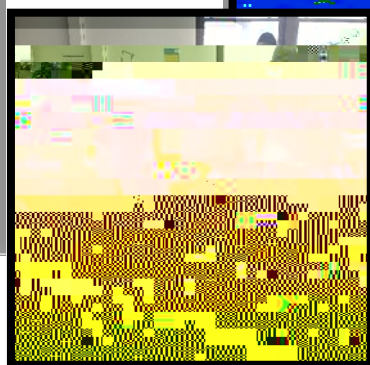
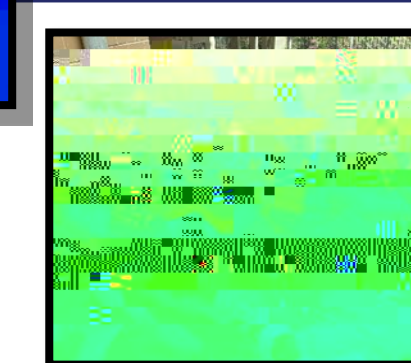
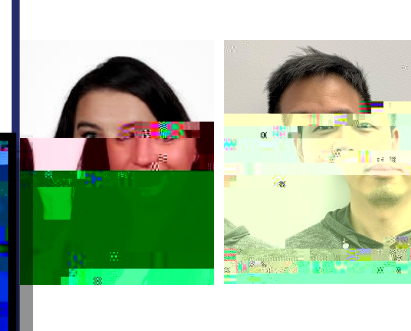
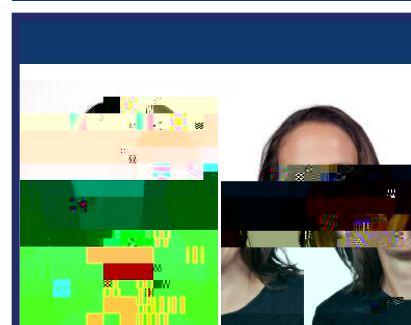


Several students were naturally forgiven for muddling up their locker combinations, misreading a timetable or losing equipment. Please browse the happy photos which capture the spirit of our year level, the campus actually and why its really nice to be back!

Making the most of Term 4

Being back on track means positive learning habits need to be encouraged. We ask for parent/guardian support to check that laptops are fully charged, pencil cases well equipped, non-uniform items are left at home and learning tasks are submitted on Compass by due dates.

Students have approximately 6 weeks to improve and extend their understanding of the final skills being taught or revisited from earlier learning! Discussions will soon commence to decide subject performance, 2021 support strategies and class groups.



* Teachers can be contacted through Compass, by phone, on Teams Chat and email should you wish to track or discuss how your child is settling back in and completing required work.

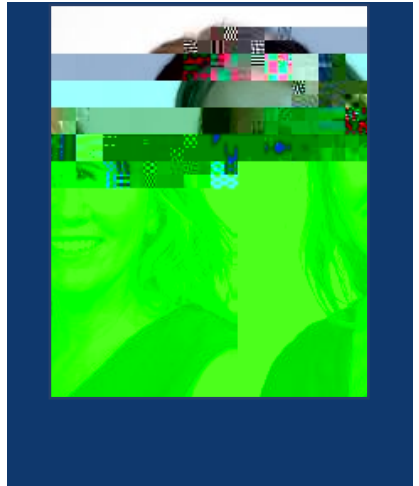
Year 9 News

A big welcome back to students, families and the broader school community. Not only welcome back to Term 4, but welcome back to on site schooling. The term is off to a flying start and I have been lucky enough to witness the elation from students as they get to see friends and teachers face to face again. There will be a number of exciting events happening this term as excursions begin to recommence and we look forward to students keeping up the enthusiasm they have shown in the first week as we progress towards the end the school year.



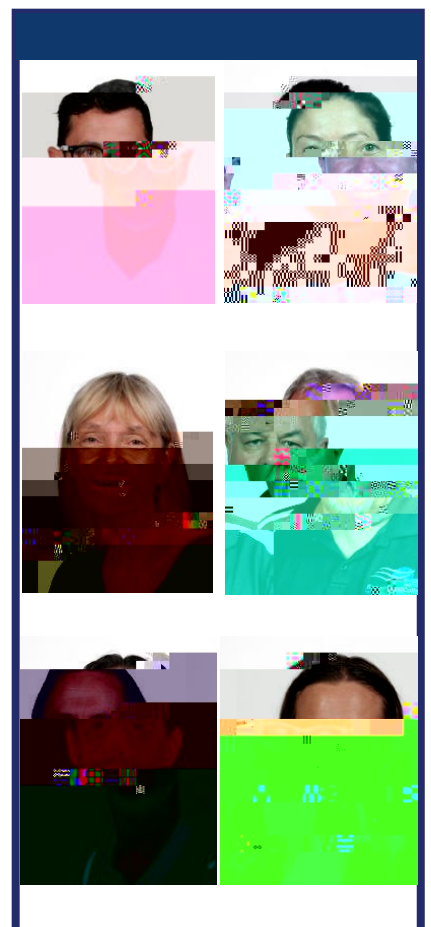
Year 10 News

There are only 6 weeks left for our students here at the junior campus before they transition to the senior campus or to other adventures (such as SEDA for **Makayla and Kayley**). The Year 10 cohort have made a cracking return to onsite learning and we (the Year 10 team) are looking forward to sharing their last few moments at the junior campus with them all!



Important Dates to remember for Term 4!

Week 3 – Y10 Tech School Excursion - **Tuesday 20 October & Wednesday 21 October** (25 students maximum for each session). Consent to attend has now closed and students have been allocated into two groups to participate in this opportunity with Gippsland TAFE. Compass will reflect which day your child will attend this event





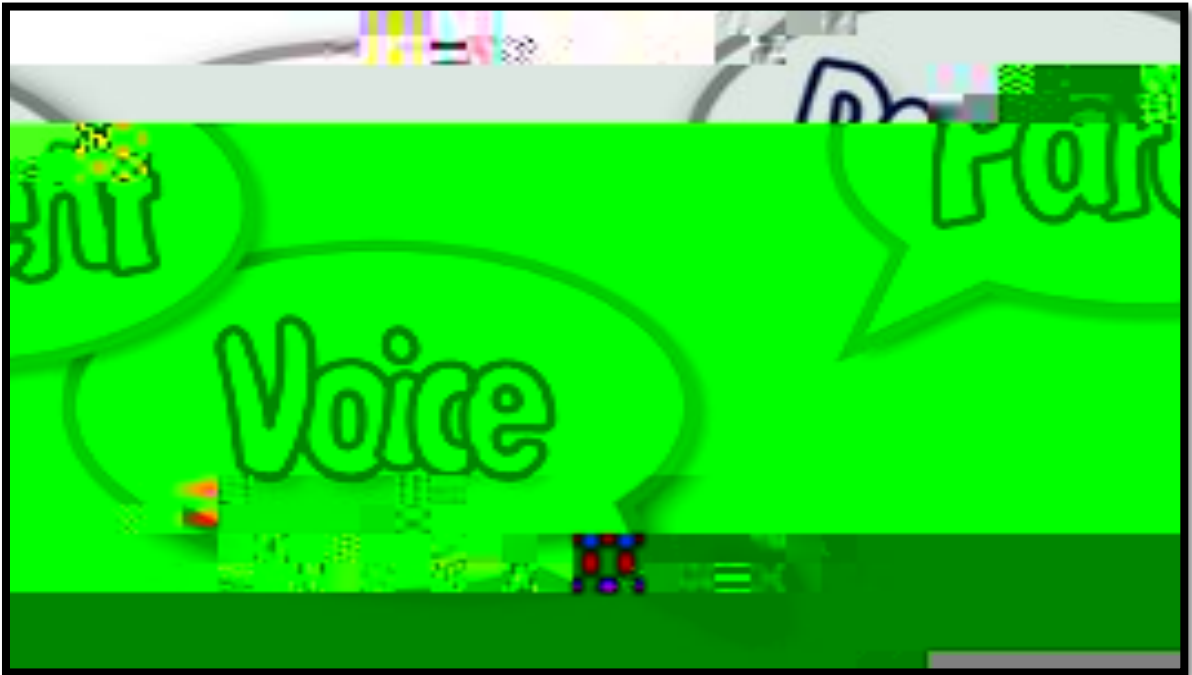
PARENT OPINION SURVEY

WE WANT OUR PARENTS TO TELL US WHAT THEY THINK!

Our school is conducting a survey to find out what parents think of our school. Each year the school conducts an opinion survey amongst a sample of the school community. This year all parents are invited to participate.

The survey is designed to assist schools in gaining an understanding of parents' perceptions of school climate, student behaviour and student engagement. Our school will use the survey results to help inform and direct future school planning and improvement strategies.

Information on how to complete the survey has been posted on Compass. This year the Parent Opinion Survey will be conducted from Monday 20th October to Friday 13th November 2020. All responses to the survey are anonymous.



Message from our Principal continues

