



Daniel Swallow
Campus Principal

Learning Behaviour Updates

Our Learning Behaviour Updates for February went live to parents and students this week. I hope you've had an opportunity to review them.

It was really pleasing to be able to send out so many letters congratulating students on the fantastic start they've made to the year. It was very pleasing to look at the improvement in learning behaviours from so many of our students. This reflects what we had been seeing in our classrooms anecdotally. It also reflects what you have

If you need assistance with accessing the reports on Compass, please don't hesitate to ask for help. Looking at the reports with your child and setting goals will assist to achieve the best possible outcomes for them. Learning Behaviour Updates are completed every five weeks except at the end of semester, with the next one being released just prior to Parent Teacher Converg

Athletics Carnival

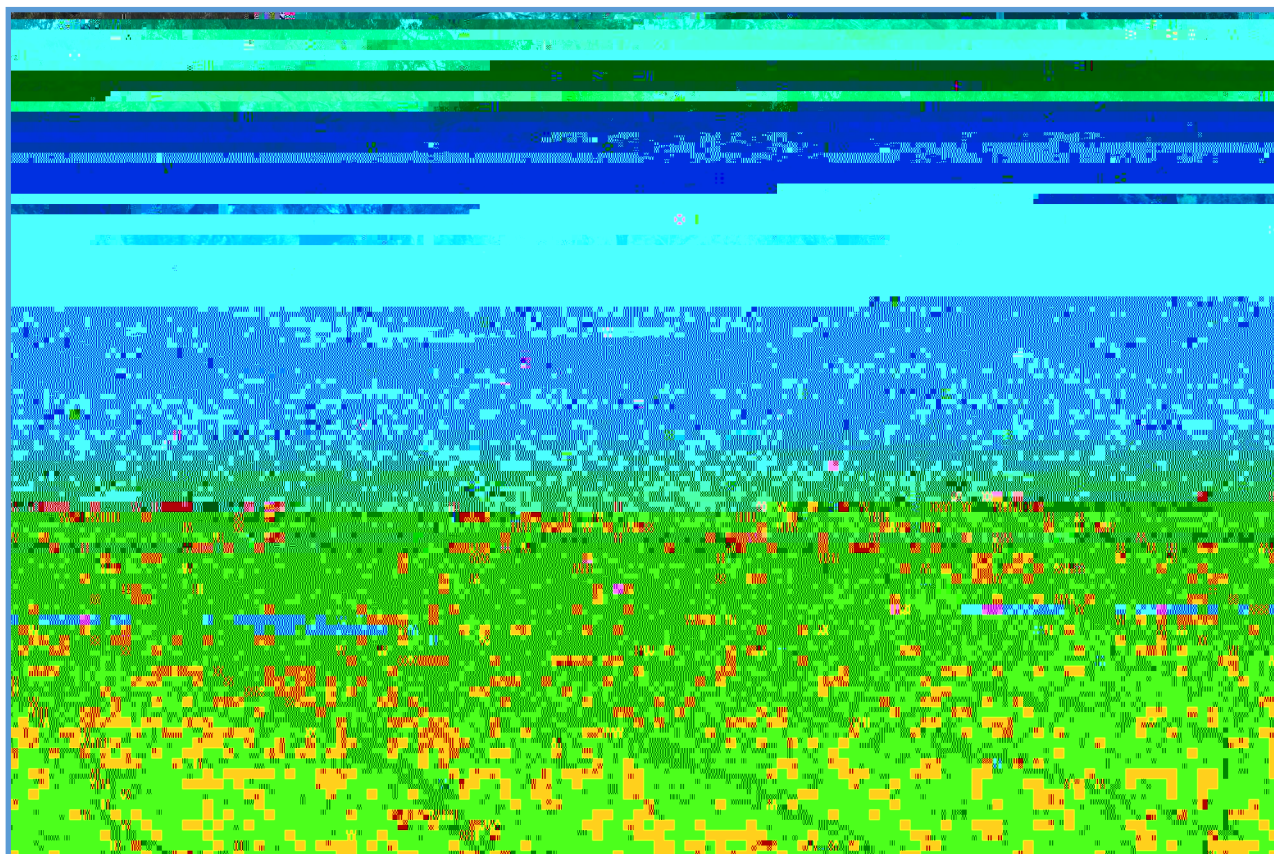
Thanks to parents for your organisation in getting permissions in on time for College Athletics. It was great to see record numbers of students going and participating.

PH: (03) 5165 0600
PO Box 3411
MORWELL Business Centre, 3841
EMAIL: kurnai.co@education.vic.gov.au



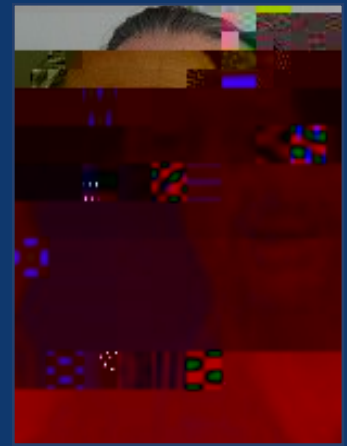


College Athletics

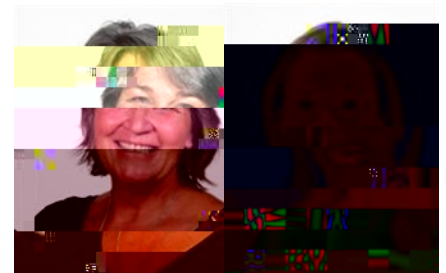


Year 9 News

Year 9 News



Anthony DiFabrizio
Year 9 Team Leader
anthony.difabrizio@education.vic.gov



Di Billingsley

Emma Hudson

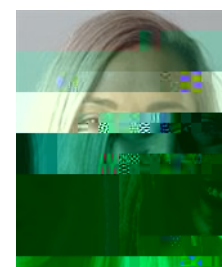
Year 9 Camp

Planning for the Year 9 Camp in Term 3 this year continues and we have created an outline of the program and commenced making tentative bookings. The purpose of the Melbourne camp is to give students a real experience of cultural, educational and leisure activities in the Melbourne CBD. It is an important part of developing a wider understanding of the world around us. We remain extremely keen to get as many students involved as possible. The camp will cost approximately \$400 per student and I encourage all families to begin planning and putting money aside to cover this cost. More information will be made available closer to the date.



Marg Tomnay

Sandra Treloar



Jillian Tymms



PBS

This year students will receive a KPA report for working well in class. This will automatically result in an SMS message being sent to a parent.

Dates To Remember

Monday March 8 th	Labour Day Public Holiday
April 26 th - May 7 th	Work Experience (2 weeks)
September 7 th - 11 th	Victoria Camp

Reminders

- Students will require a device (please contact us if you need some support).
- Students need to be at school by 8:35 am.
- Students need to be in complete school uniform (please contact us if you need some support).
- NO MOBILES during school hours

Contact Details

If you have any questions or concerns regarding Year 10 students please don't hesitate to e-mail us or phone on 51650600

tangi.sheryl@education.vic.gov.au



A large, empty rectangular box with a thin black border, occupying the majority of the page. It is intended for a student to write their name and address.



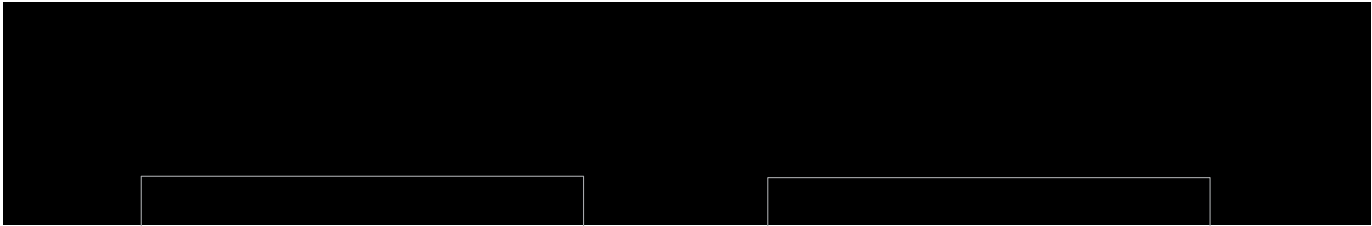
The annual 'Rockfest'



Camps, Sports and Excursions Fund applications

The Camps, Sports and Excursions Fund helps eligible families to cover the costs of school trips, camps and sporting activities.

If you have a valid means-tested concession card, such as a Veterans Affairs Gold Card, Centrelink Health Care Card or Pensioner Concession Card, or are a temporary foster parent, you may be eligible. There is also a special



Surname

□ □ □ □ □ □ □ □ □ □
□ □



